

RESEARCH DEPARTMENT

subsurface modeling & engineering

RD SME – HYBRID EVENT

04. MAI 2022

15:00 - 17:00 UHR

HZO 40 (IN PERSON)

OR VIA

ZOOM (ONLINE)

→ [LINK](#) ←

RD SME | HYBRID EVENT 1 KEYNOTE – 1 LECTURE

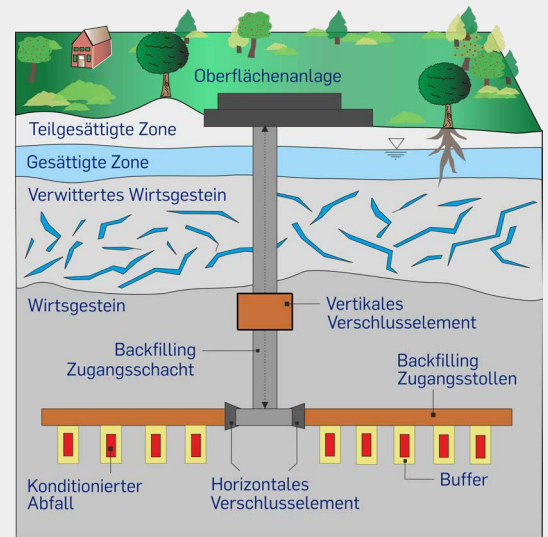
15:00 Uhr

SANDWICH SUPPORT PROJECT 1: HETEROGENEOUS BENTONITE HYDRATION IN THE CONTEXT OF SEALING ELEMENTS IN DEEP GEOLOGICAL FORMATIONS

DR.-ING. WIEBKE BAILLE¹, ANTONIA NITSCH¹, PROF. DR. KATJA EMMERICH²

¹Soil Mechanics· Foundation Engineering and Environmental Geotechnics, RUB

²Clay Science, KIT



LECTURE

15:30 Uhr

GERMAN NUCLEAR WASTE MANAGEMENT: GEOSCIENTIFIC ASPECTS AND RELATED RESEARCH AND DEVELOPMENT AT THE GERMAN IMPLEMENTER BGE

DR. AXEL LIEBSCHER

Bundesgesellschaft für Endlagerung (BGE)

The Bundesgesellschaft für Endlagerung (BGE) is looking for a site for a repository for high-level radioactive waste that will ensure the best possible safety for a million years. Currently it operates the repositories ‚Konrad‘ and ‚Morsleben‘ as well as the ‚Asse II mine‘ and the ‚Gorleben mine‘.

The presentation given by Dr. Axel Liebscher (BGE) will examine the German search for a site and associated research and development regarding nuclear waste management.

KEYNOTE

Teilgebiete gemäß § 13 Standortauswahlgesetz

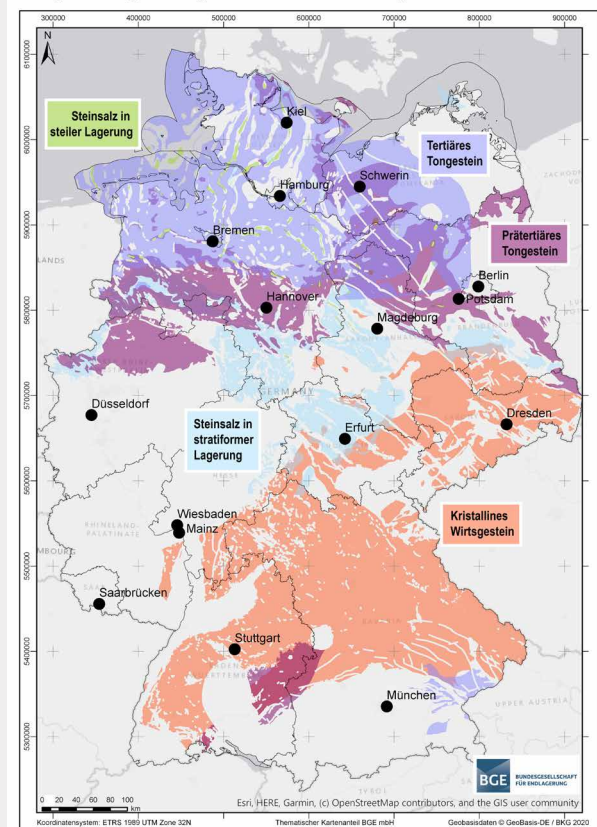


Figure © BGE